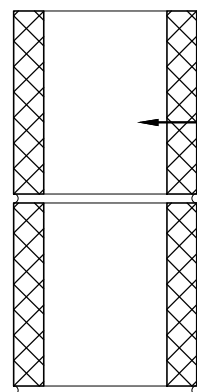
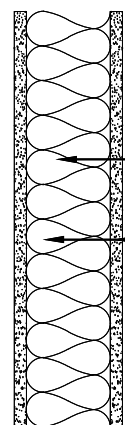


A UNIT 302R FLOOR PLAN
 1/8" = 1'-0"

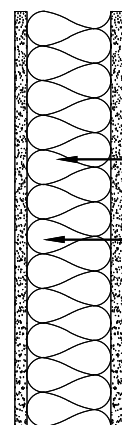
General Notes:
 1. Permit to construct interior wall framing.
 2. M&E Permit drawings to be submitted separately.
 3. Refer to Code Footprint which is on File with the City of Salina for Code Compliance.



8" Light Weight Concrete Block Wall Refer to Stair Tower Drawings
 Meets 2 hr Construction per IBC table 721.3.2 Expanded Shale Block, un-grouted meets 2hr

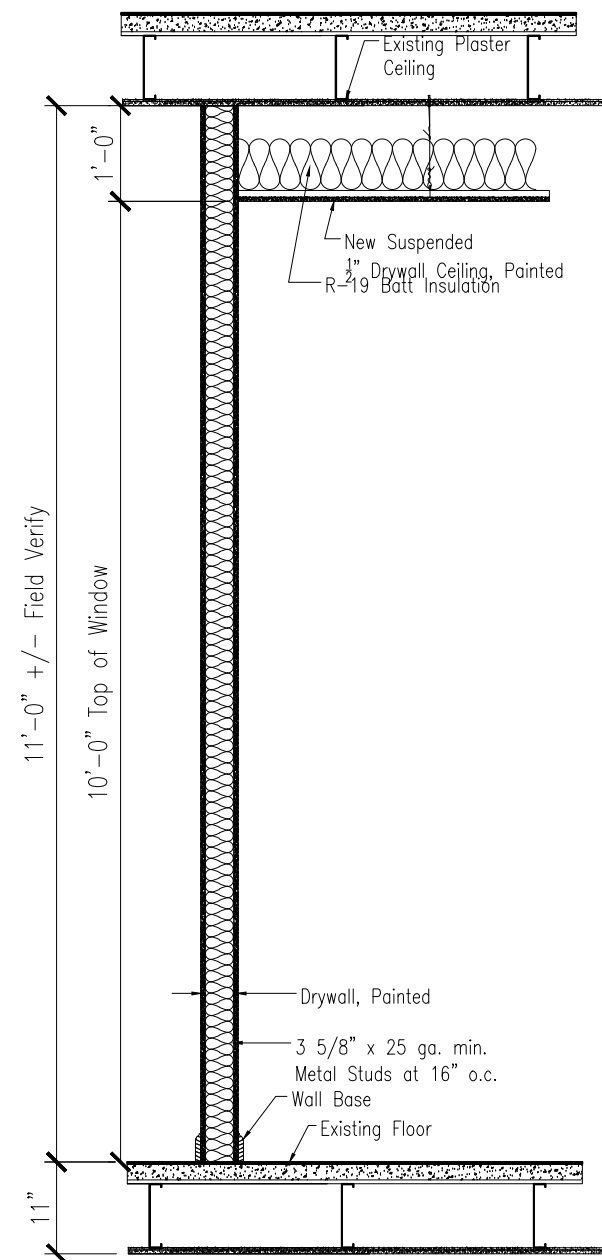


3/8" x 25 ga min Metal Studs at 16" o.c.
 1/2" Drywall
 Non-Rated Construction

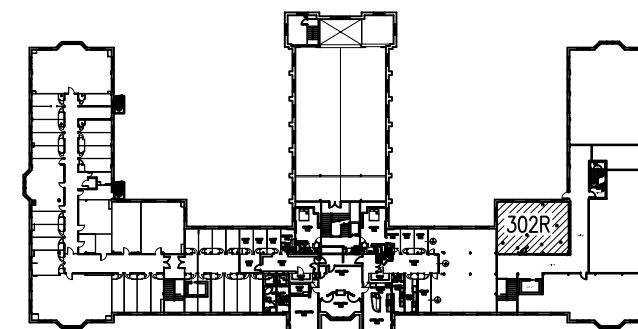


3/8" x 25 ga min Metal Studs at 16" o.c.
 5/8" type X Drywall
 Meets 1 hr Construction per IBC table 720.1(2) Item 13-1.1

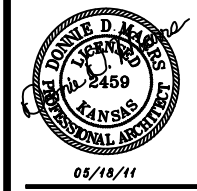
1 WALL SECTION MATERIALS
 1 1/2" = 1'-0"



2 TYPICAL WALL SECTION
 1/2" = 1'-0"



B KEY PLAN



REPRODUCTION: This document and the information contained herein may not be reproduced or excerpted from without the expressed written consent of DMA Architects, PA. Unauthorized copying, disclosure or construction use are prohibited by Copyright Law.

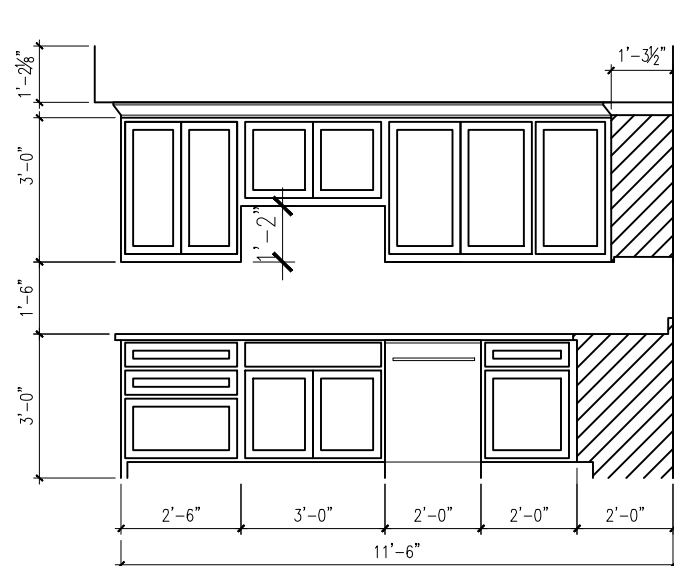


REPRODUCTION: This document and the information contained herein may not be reproduced or excerpted from without the expressed written consent of DMA Architects, PA. Unauthorized copying, disclosure or construction use are prohibited by Copyright Law.

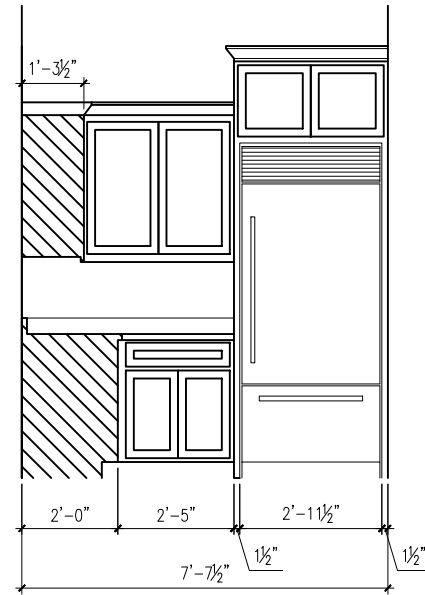
Project: Marymount Properties Unit 302R
2035 E. Iron #100
Salina, KS 67401

Building Plan

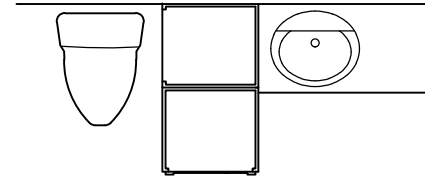
Scale: 0000 A2
J.M./D.M. OF
Date: 06-23-11 2



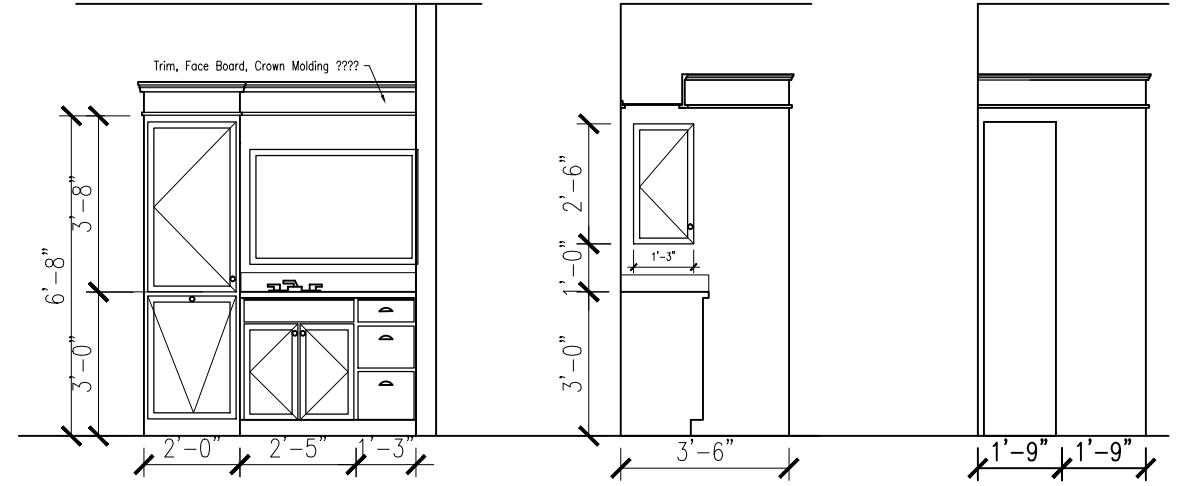
1 KITCHEN EAST
1'4" = 1'-0"



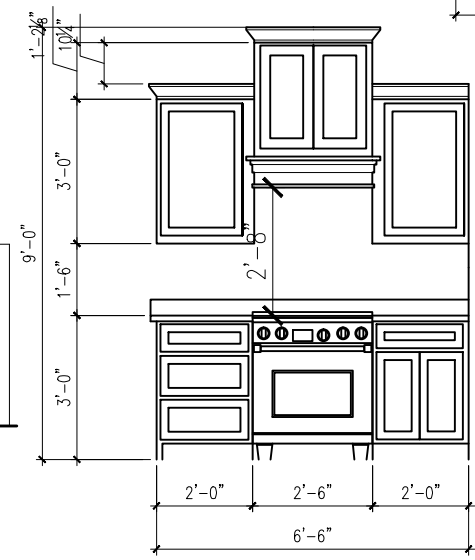
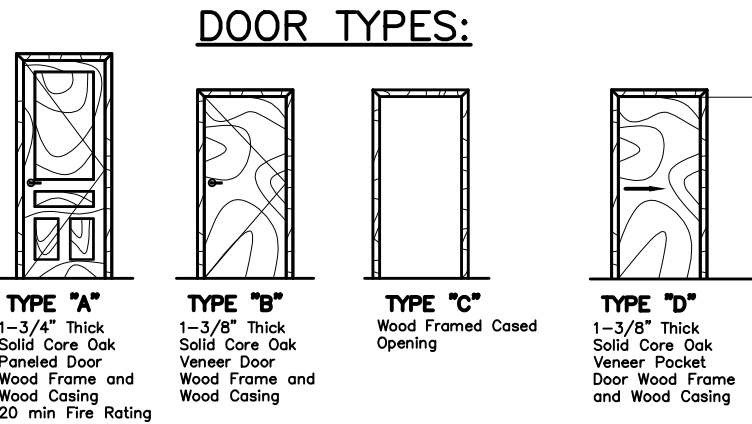
2 SOUTH WALL
1'4" = 1'-0"



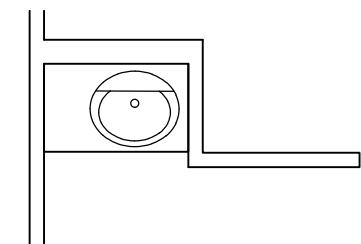
C BATH PLAN
1'4" = 1'-0"



3 WALL ELEV. 1'4" = 1'-0"
4 WALL ELEV. 1'4" = 1'-0"
5 WALL ELEV. 1'4" = 1'-0"

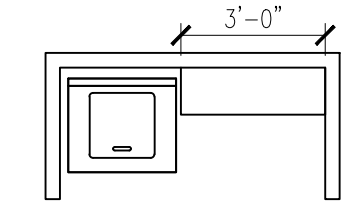


6 KITCHEN WEST
1'4" = 1'-0"

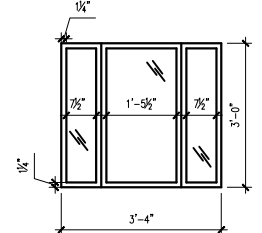


D BATH PLAN
1'4" = 1'-0"

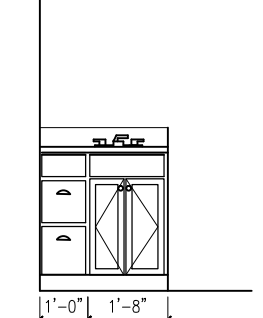
E BATH PLAN
1'4" = 1'-0"



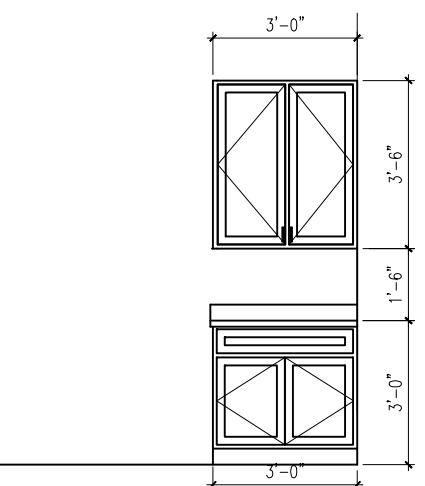
F W&D Elev
1'4" = 1'-0"



6 WALL ELEV.
1'4" = 1'-0"



7 WALL ELEV.
1'4" = 1'-0"



8 WALL ELEV.
1'4" = 1'-0"

DOOR AND FRAME SCHEDULE

MARK	DOOR			MATERIAL	GLAZING	FRAME EL	FIRE RATING LABEL	NOTES
	WD	HGT	THK					
1	3'-0"	8'-0"	1 3/4"	WD	--	--	20 MIN	--
2	2'-8"	6'-8"	1 3/4"	WD	--	C	--	--
3	2'-8"	6'-8"	1 3/4"	WD	--	--	--	--
4	2'-8"	6'-8"	1 3/4"	WD	--	C	--	--
5	2'-4"	6'-8"	1 3/8"	WD	--	--	--	--
6	3'-0"	6'-8"	1 3/4"	WD	--	--	--	--
7	2'-8"	6'-8"	1 3/8"	WD	--	--	--	--
8	2'-8"	6'-8"	1 3/8"	WD	--	--	--	--
9	3'-0"	6'-8"	NA	N/A	--	--	--	Cased opening