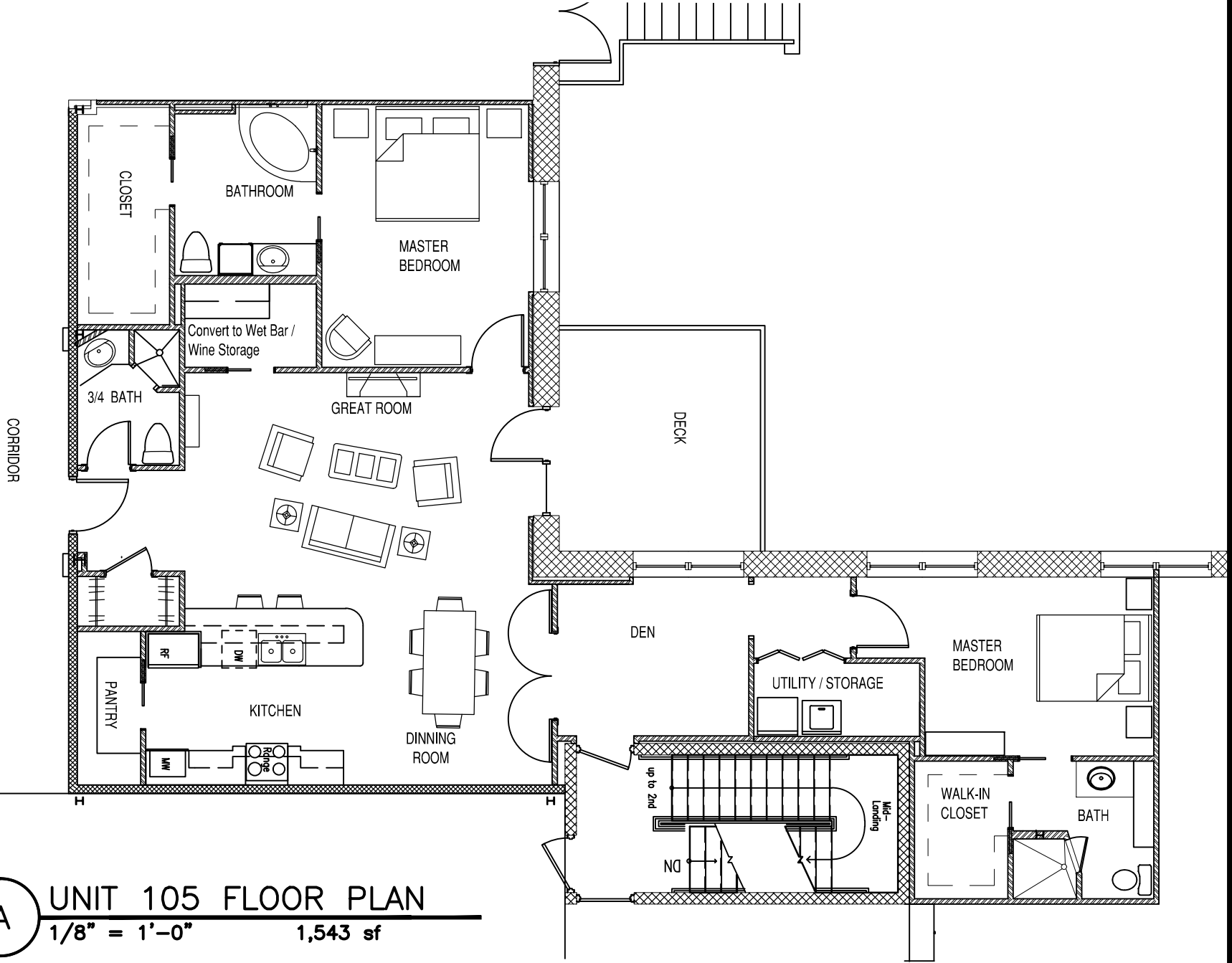


**A** UNIT 105 FLOOR PLAN  
 1/8" = 1'-0" 1,543 sf



**DMA ARCHITECTS, PA**

2035 E. Iron, Suite 100 / Salina, KS 67401  
 Salina: 785 823 6002 / Fax: 785 823 2910  
 Great Bend: 620 793 3442

Project: **Marymount Properties  
 Unit 105 Current Space  
 2035 E Iron #100  
 Salina, KS 67401**

Job: XXXX  
 Drawn: J.M./D.M.  
 Date: 09-07-16

1 of 1